

2.92mm/2.92mm

DC - 40GHz, Coaxial Panel Adapters For Front Access Ports

DESCRIPTION

This "KPC292MF FPA" called coaxial front panel adapter that easy to mate, good return loss and low insertin loss, are designed for frequently connect/disconnect accessed broadband measurement, instrument and system use.

SPECIFICATIONS:

Electrical:

Frequency Range	DC - 40 GHz
Return Loss	Better than 26 dB
Insertion Loss	<0.3 dB
Electrical Length	Below (Nominal)
Temperature Range	-55 to +125 deg.C

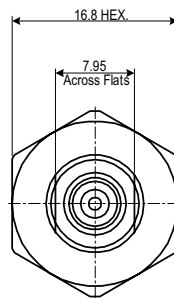
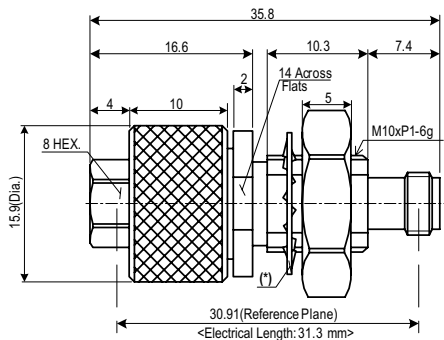
Mechanical:

Body:	Passivated Stainless steel (*)
Outer Conductors:	Gold Plated Stainless steel
Inner Conductors:	Gold Plated Beryllium Copper
Coupling Torque	90 N-cm(Nominal)
Connect/Disconnect Life	>1,000 Cycles

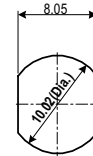


Production Status
Three weeks Lead-Time will be available for shipping.

TYPE: KPC292MF FPA 2.92mm Male/2.92mm Female



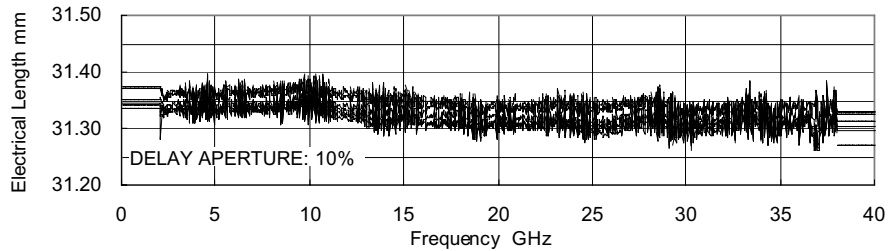
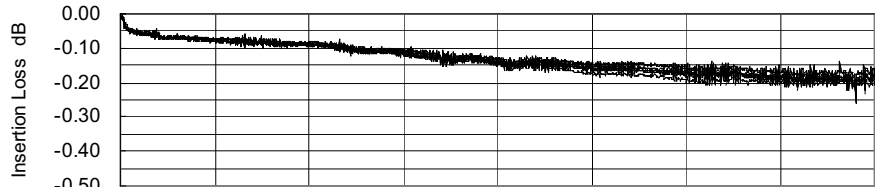
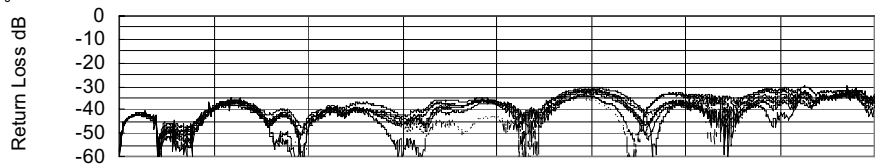
Mounting Hole and Thickness (Recommended)



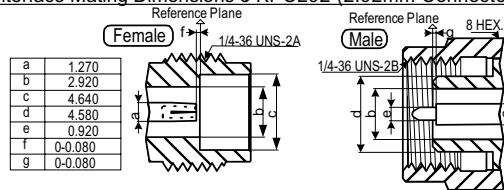
Thickness: 2 to 5.4mm

Typical Performance

No. of Samples: 7 pcs



Interface Mating Dimensions of KPC292 (2.92mm Connectors)



a	1.270
b	2.920
c	4.640
d	4.580
e	0.920
f	0-0.080
g	0-0.080

<*> Matable with 3.5mm and SMA

Note:
 - All dimensions are in Millimeters.
 - (*) The toothed lockwasher is nickel plated steel.

Specifications Subject to Change Without Notice.

Copyright(C) 2002-2007 KAWASHIMA Mfg. Co., Ltd. All rights reserved.

292MF FPA Rev.00 JLY.2007



Kawashima Manufacturing Co., Ltd.

1-3-5 Higashiikuta, Tama-ku, Kawasaki 214-0031 JAPAN

TEL: +81-44-911-7073
http://www.kmco.biz/

FAX: +81-44-911-9621
e-mail: sales @kmco.co.jp