

1.85mm/1.85mm

DC - 65GHz, Coaxial Panel Adapters

DESCRIPTION

These "KPC185MFPA, FMPA, FFPA and MMPA" coaxial panel adapters that 9.5mm "D" holed panel mountable, low SWR and low loss, are designed for broadband measurement, instrument and system use.

SPECIFICATIONS:

Electrical:

Frequency Range DC - 65 GHz
 SWR <1.3
 Insertion Loss <0.4 dB
 Electrical Length Below (Nominal)
 Temperature Range -55 to +125 deg.C

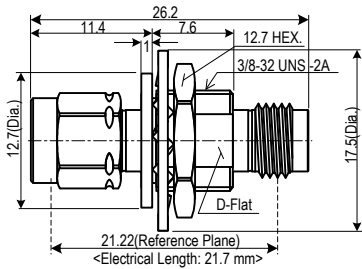
Mechanical:

Body and Outer Conductors:
 -Passivated Stainless steel (*)
 Inner Conductors:
 -Gold Plated Beryllium Copper and Brass
 Coupling Torque 90 N-cm(Nominal)
 Connect/Disconnect Life >1,000 Cycles

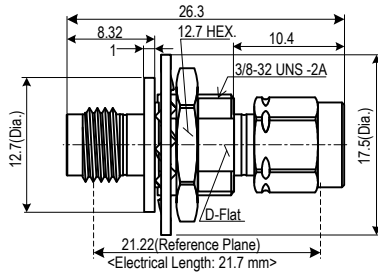


Production Status
 Two weeks Lead-Time will be available for shipping.

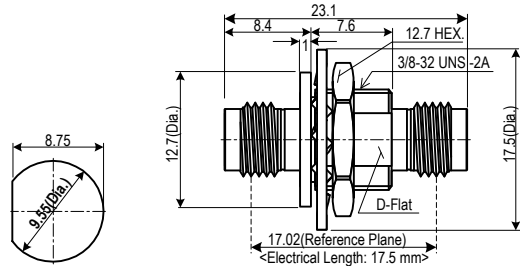
TYPE: KPC185MFPA 1.85mm Male/1.85mm Female



TYPE: KPC185FMPA 1.85mm Female/1.85mm Male

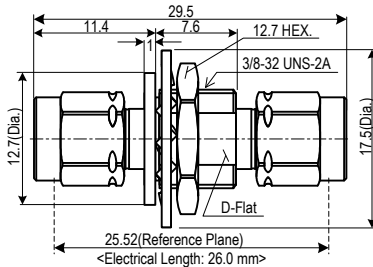


TYPE: KPC185FFPA 1.85mm Female/1.85mm Female

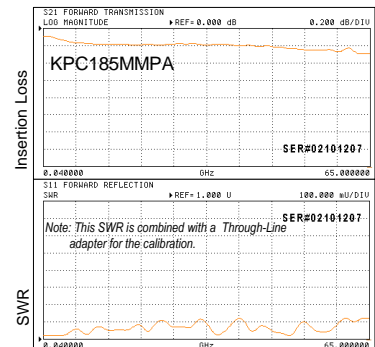
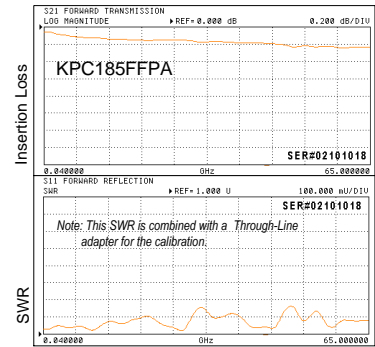
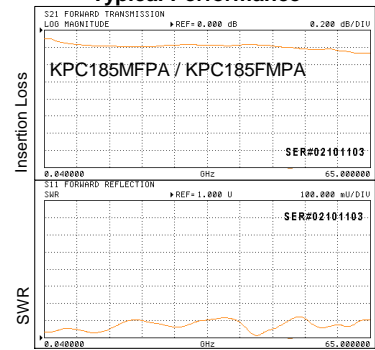


Mounting Hole
 (Recommended)

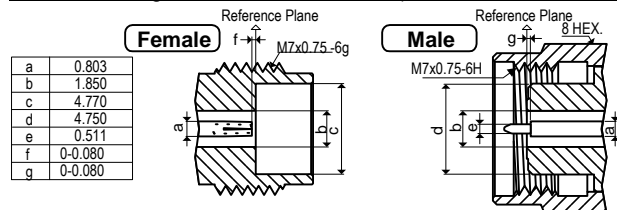
TYPE: KPC185MMPA 1.85mm Male/1.85mm Male



Typical Performance



Interface Mating Dimensions of KPC185 (1.85mm Connectors<*>)



Note:
 - All dimensions are in Millimeters.
 - (*)The toothed lockwasher is chromate converted zinc plated steel.

Specifications Subject to Change Without Notice.

Copyright(C) 2002-2013 KAWASHIMA Mfg. Co., Ltd. All rights reserved.



Kawashima Manufacturing Co., Ltd.

1-3-5 Higashiikuta, Tama-ku,
 Kawasaki 214-0031 JAPAN

TEL: +81-44-911-7073 FAX: +81-44-911-9621
 http://www.kmco.biz/ e-mail: sales@kmco.co.jp