

1.85mm/1.85mm

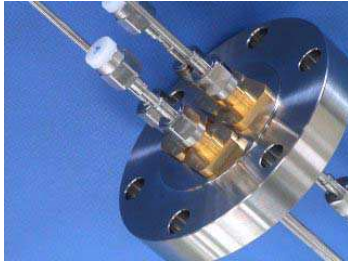
DC - 65GHz, Hermetically Sealed, Coaxial Adapter

DESCRIPTION

This "KPC185FFHA " Hermetically Sealed 1.85mm to 1.85mm Coaxial Adapter that

- DC to 65GHz,
- Low SWR and loss,
- Hermetic RF interface between vacuum and atmosphere environment,
- Small mounting space,

is designed for broadband devices, instrument and component testing use.



ex. of 4-Adapters mounted to 70mm dia. vacuum flange

SPECIFICATIONS:

Electrical:

Frequency Range	DC - 65 GHz
Return Loss	>15 dB
Insertion Loss	<0.7 dB
Electrical Length	Below (Nominal)
Temperature Range	-55 to +125 deg.C

Mechanical:

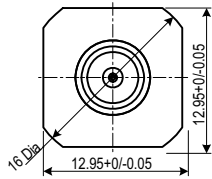
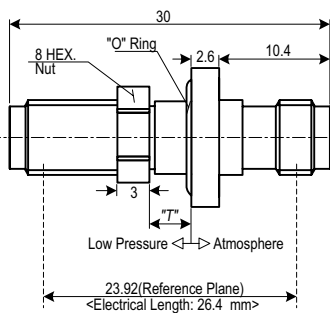
- Body and Outer Conductors:
 - Gold Plated Stainless steel
- Inner Conductors:
 - Gold Plated Beryllium Copper
- Inner and Outer Conductors for seal:
 - Gold Plated Fe/Ni/Co Alloy(KOVAR)
- Insulator for seal: #7070 Glass(Corning)
- Gasket for flange seal: Fluoroelastomer "O" Ring
- Coupling Torque 90 N-cm(Nominal)
- Connect/Disconnect Life >1,000 Cycles
- He leak rate(*) 1×10^{-10} Pam³/Sec (1×10^{-9} atm cc /Sec)



Production Status
4 weeks Lead-Time will be available for shipping.

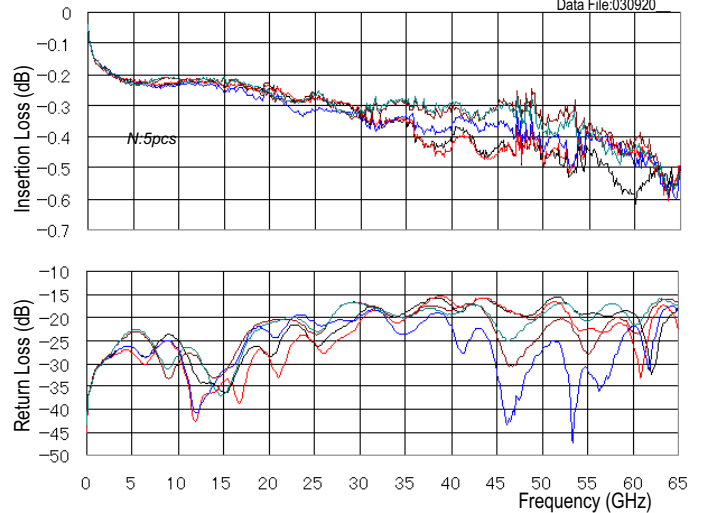
TYPE: KPC185FFHA

1.85mm Female/1.85mm Female

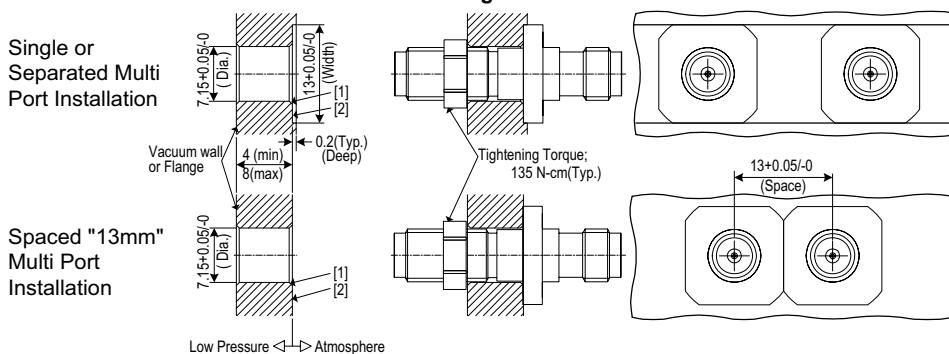


"T" : Vacuum wall or Flange thickness, 4(min) to 8(max) mm

Typical Performance



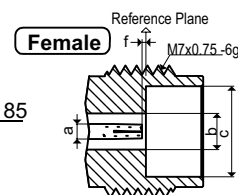
Recommended Mounting Hole and Installation



Note:

- All dimensions are in Millimeters.
- [1] Corners : Less than 0.05 x 0.05 mm
- [2] Required "Smooth Surface"
- (*) As Per MIL-STD-883E, METHOD1014.10, Test Condition A4

Interface Mating Dimensions of KPC185 (1.85mm Connectors\leftrightarrow)



a	0.803
b	1.850
c	4.770
d	-----
e	-----
f	0-0.080
g	-----

\leftrightarrow Matable with 2.4mm Connectors

Specifications Subject to Change Without Notice.

Copyright(C) 2006 KAWASHIMA Mfg. Co., Ltd. All rights reserved.



Kawashima Manufacturing Co., Ltd.

1-3-5 Higashiikuta, Tama-ku,
Kawasaki 214-0031 JAPAN

TEL: +81-44-911-7073
http://www.kmco.biz/

FAX: +81-44-911-9621
e-mail: sales@kmco.co.jp

185FFHA Rev01 Mar. 2006