

2.92mm/2.4mm

# DC - 40GHz, Coaxial Adapters, Between-Series

## DESCRIPTION

The coaxial adapters between 2.92mm and 2.4mm that small size, low SWR and low loss, are designed for broadband measurement, instrument and system use.

## SPECIFICATIONS:

### Electrical:

Frequency Range	DC - 40 GHz
SWR	<1.22
Insertion Loss	<0.25dB
Electrical Length	17.5 mm(Nominal)
Temperature Range	-55 to +125 deg.C

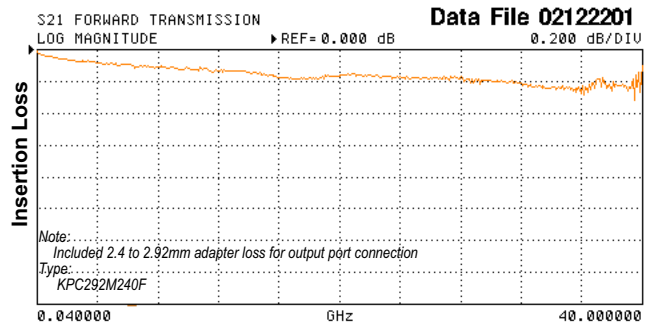
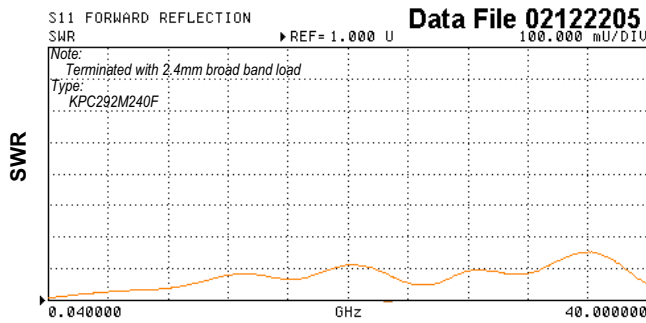
### Mechanical:

- Body and Outer Conductors:
  - Passivated Stainless steel
- Inner Conductors:
  - Gold Plated Beryllium Copper and Brass
- Coupling Torque 90 N-cm(Nominal)
- Connect/Disconnect Life >1,000 Cycles



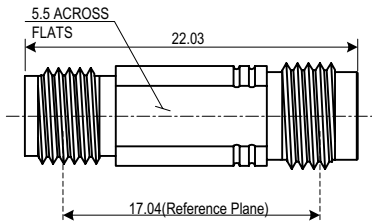
**Production Status**  
Two weeks Lead-Time will be available for shipping.

## Typical Performance



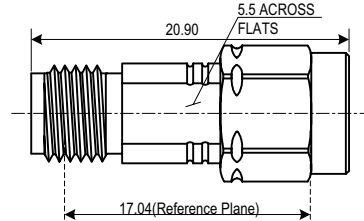
### TYPE: KPC292F240F

2.92mm Female/2.4mm Female



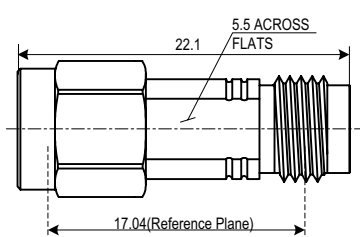
### TYPE: KPC292F240M

2.92mm Female/2.4mm Male



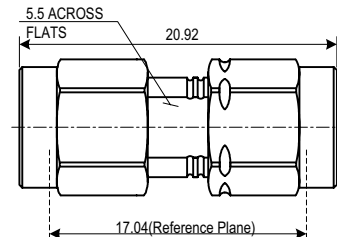
### TYPE: KPC292M240F

2.92mm Male/2.4mm Female



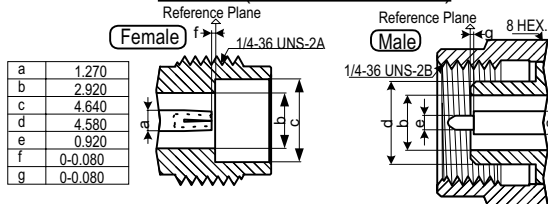
### TYPE: KPC292M240M

2.92mm Male/2.4mm Male

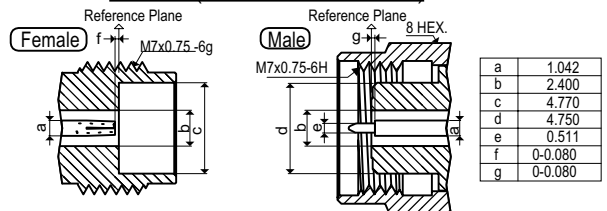


## Interface Mating Dimensions

### KPC292 (2.92mm Connectors)



### KPC240 (2.4mm Connectors<\*>)



Note: All dimensions are in Millimeters.

Specifications Subject to Change Without Notice.

Copyright(C) 2002 KAWASHIMA Mfg. Co., Ltd. All rights reserved.

292\_240 Rev. Jan.2003