

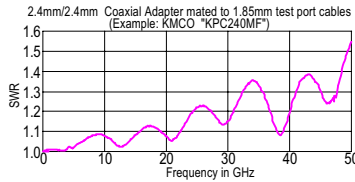
2.4mm/1.85mm

DC - 50GHz, Coaxial Adapters, Between-Series

DESCRIPTION

The coaxial adapters between 2.4mm and 1.85mm that small size, low SWR and low loss, are designed for broadband measurement, instrument and system use.

To solve the following SWR degradation, these adapters have been designed.



SPECIFICATIONS:

Electrical:

Frequency Range	DC - 50 GHz
SWR	<1.25 (*)
Insertion Loss	<0.4 dB (**)
Electrical Length	17.5 mm(Nominal)
Temperature Range	-55 to +125 deg.C

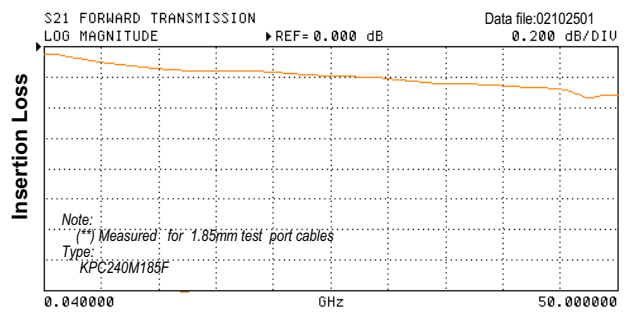
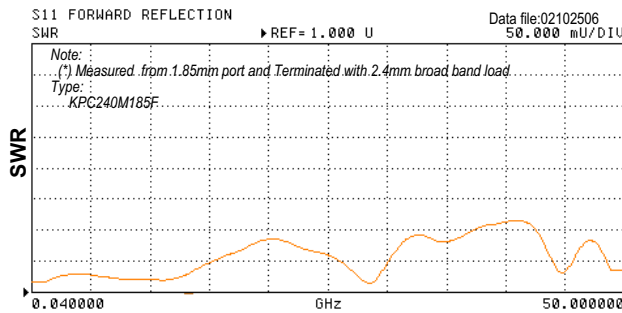
Mechanical:

Body and Outer Conductors:	-Passivated Stainless steel
Inner Conductors:	-Gold Plated Beryllium Copper and Brass
Coupling Torque	90 N-cm(Nominal)
Connect/Disconnect Life	>1,000 Cycles



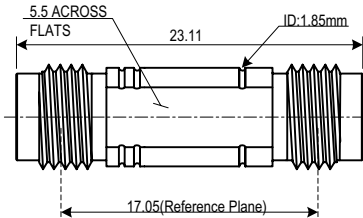
Production Status
Two weeks Lead-Time will be available for shipping.

Typical Performance



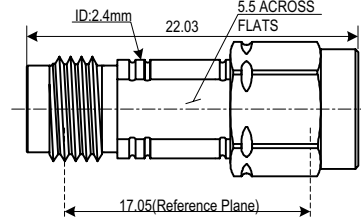
TYPE: KPC240F185F

2.4mm Female/1.85mm Female



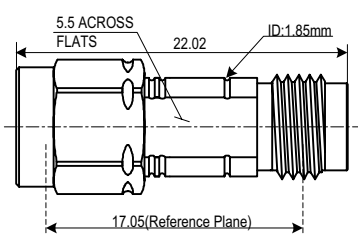
TYPE: KPC240F185M

2.4mm Female/1.85mm Male



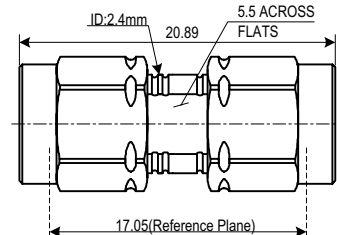
TYPE: KPC240M185F

2.4mm Male/1.85mm Female

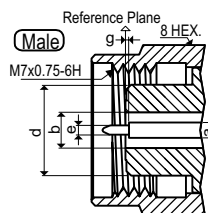
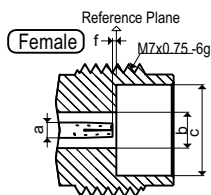


TYPE: KPC240M185M

2.4mm Male/1.85mm Male



Interface Mating Dimensions KPC240 and 185 Connectors



KPC240(2.4mm)	
a	1.042
b	2.400
c	4.770
d	4.750
e	0.511
f	0-0.080
g	0-0.080

KPC185(1.85mm)	
a	0.803
b	1.850
c	4.770
d	4.750
e	0.511
f	0-0.080
g	0-0.080

Note: All dimensions are in Millimeters.

Specifications Subject to Change Without Notice.

Copyright(C) 2002 KAWASHIMA Mfg. Co., Ltd. All rights reserved.

240 185 Rev. Nov.2002