

1.85, 2.92 mm and SMPM Panel Adapters

DESCRIPTION

"KPC185F-SMPM-FD and KPC292F-SMPM-FD" coaxial panel adapters that 9.5mm "D" holed panel mountable, low SWR and low loss, are designed for broadband measurement, instrument and system use.

Connector Interfaces:

- 1.85 and 2.92 mm are conformed IEEE-std-287.
- SMPM male full detent interface as per MIL-STD-348A 328.2.

SPECIFICATIONS:

Electrical:

Frequency Range	DC - 65 GHz (1.85mm) DC - 40 GHz (2.92mm)
Return Loss	Better than 14dB
Insertion Loss	<0.7 dB
Temperature Range	-55 to +125 deg.C

Mechanical:

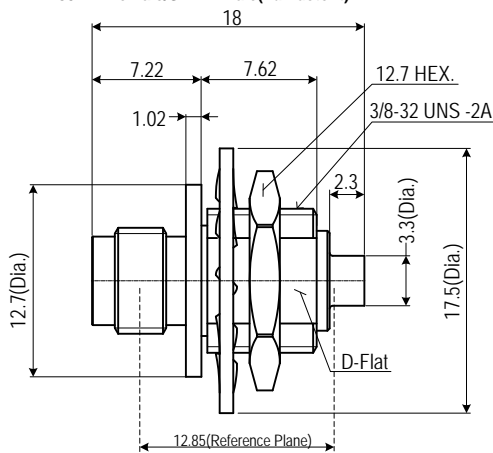
- Body and Outer Conductors:
 - Passivated Stainless steel (*)
- Inner Conductors:
 - Gold Plated Beryllium Copper and Brass
- Coupling Torque : 90 N-cm(Nominal)
- Connector durability : >100 cycles [Predicted for SMPM]



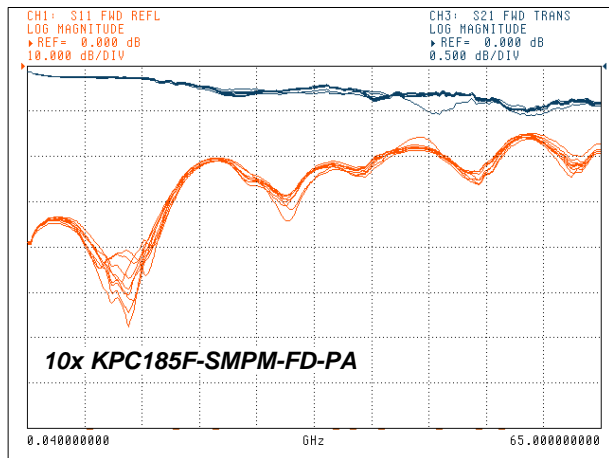
Production Status
Two weeks Lead-Time will be available for shipping.

TYPE: KPC185F-SMPM-FD-PA

1.85mm Female/SMPM-Male(Full detent)

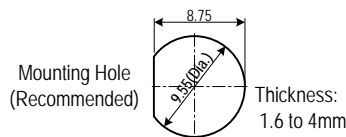
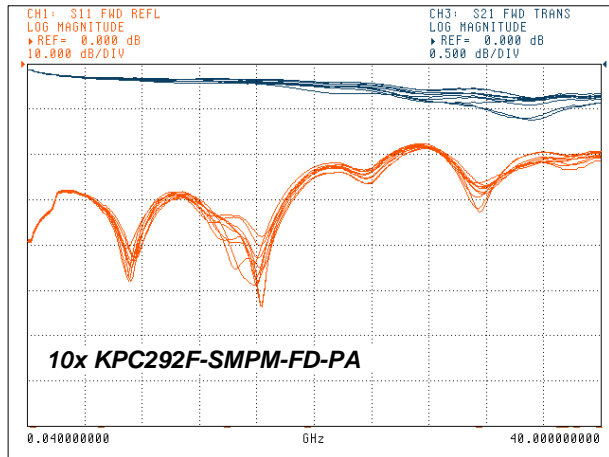
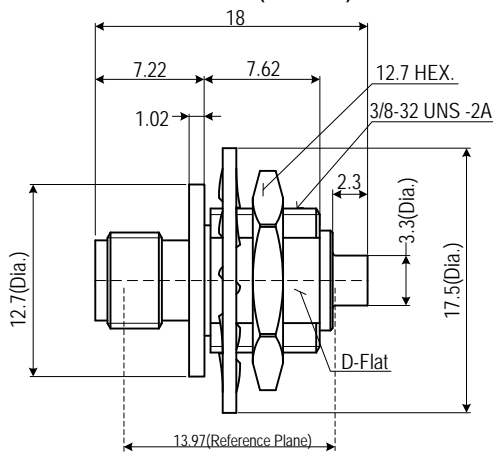


Typical performance, including Coaxial adapters for SMPM



TYPE: KPC292F-SMPM-FD-PA

2.92mm Female/SMPM-Male(Full detent)



- Note:
- All dimensions are in Millimeters.
 - (*)The toothed lockwasher is chromate converted zinc plated steel.

Specifications Subject to Change Without Notice.

Copyright(C) 2012 KAWASHIMA Mfg. Co., Ltd. All rights reserved.

185&292-SMPMpa, Rev.00,May,2012