

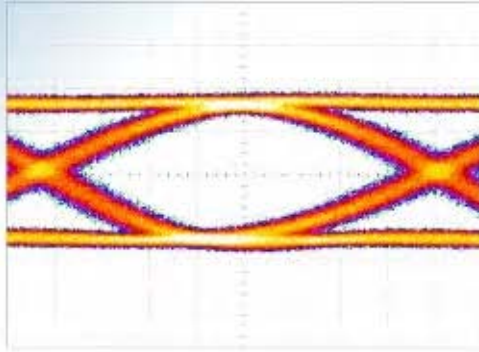


SHF Communication Technologies AG

Wilhelm-von-Siemens-Str. 23 • Aufgang D • 12277 Berlin – Marienfelde • Germany

Phone ++49 30 / 772 05 10 • Fax ++49 30 / 753 10 78

E-Mail: sales@shf.biz • Web: <http://www.shf.biz>



Datasheet SHF DCB65 Broadband DC-Block



Resonance free transmission performance from 20 kHz to over 65 GHz
Innovative construction – Patent pending

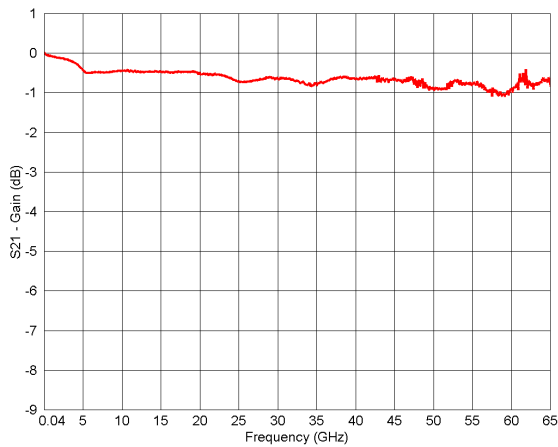




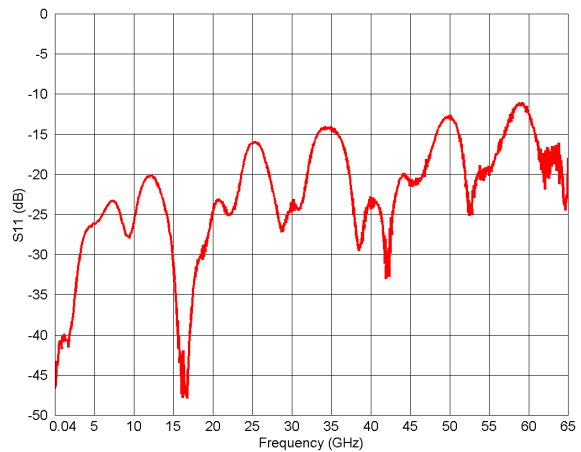
Specifications – SHF DCB65

Parameter	Symbol	Unit	Min	Typ	Max	Conditions
High frequency 3 dB point	f_{HIGH}	GHz	65			
Low frequency 3 dB point	f_{LOW}	kHz			30	with 10 VDC applied
Insertion loss	S_{21}	dB		1		<55 GHz
Input return loss	S_{11}			-30 -20 -10	-25 -18 -9	<2.5 GHz <20 GHz <45 GHz <65 GHz
DC Voltage	VDC	V			16	
Input power	P_{in}	dBm			30	
Rise/fall time	t_r/t_f	ps			5	20...80%
Input connector						V / 1.85mm
Output connector						V / 1.85mm
Dimensions		mm				17x10x7 excluding connectors

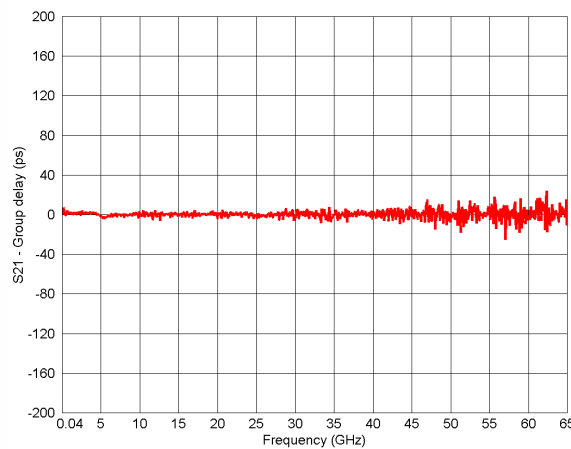
S-parameters, group delay and outline drawing



Insertion loss



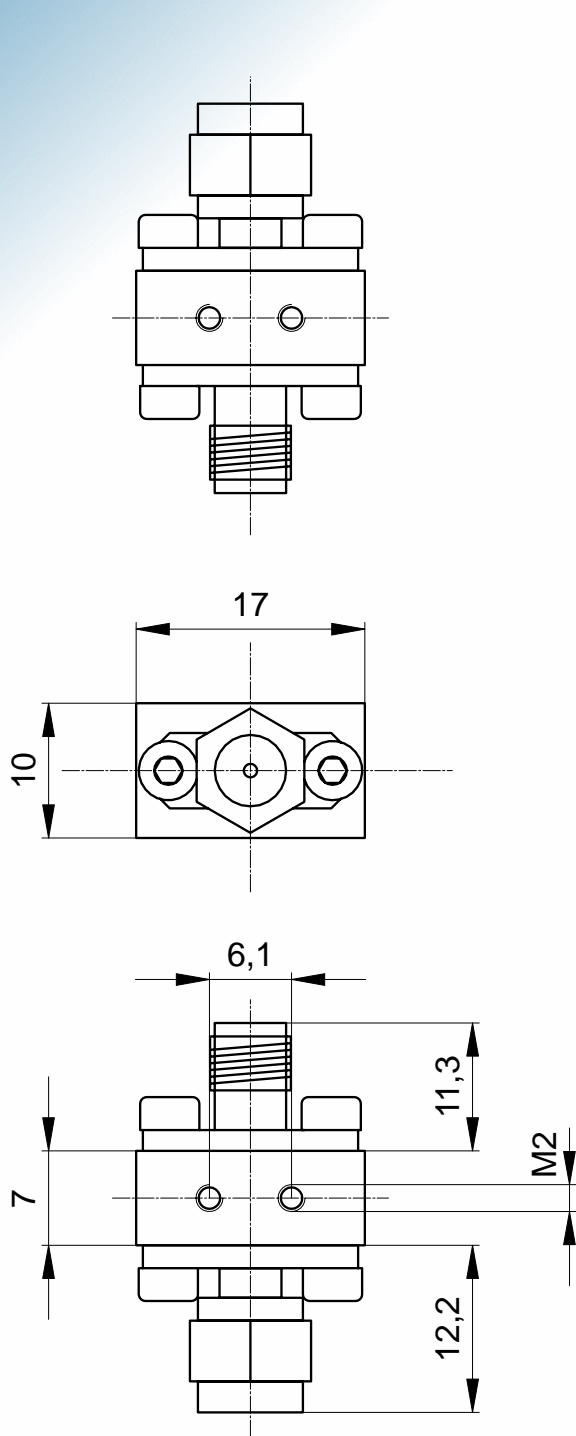
Input return loss



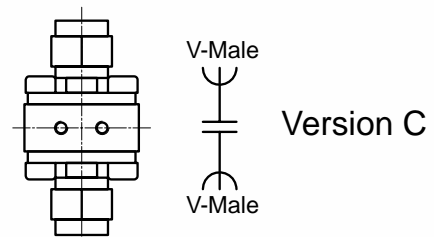
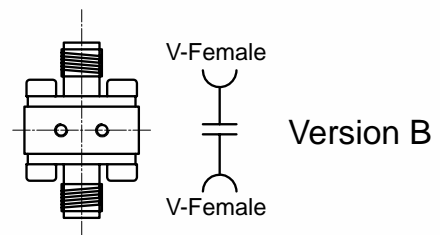
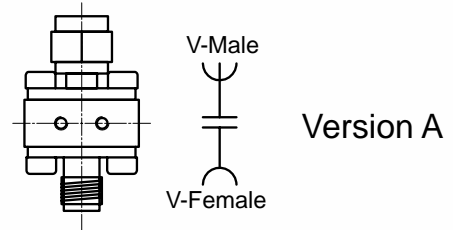
Group delay. Aperture of measurement: 100 MHz



Outline drawing



M1:1



All dimensions in mm