

2.92 mm DC - 40 GHz, Two-Hole Flange Launchers & Glass Beads

DESCRIPTION

"KPC292F302" two-hole flange launchers and "GB292" glass beads are designed for broadband devices and units with coaxial I/O interfaces.

SPECIFICATIONS

Connectors

Electrical:

Frequency Range DC - 40 GHz
 SWR < 1.5 (*)
 Temperature Range -55 to +125 °C

Mechanical:

Body and Outer Conductor Passivated Stainless Steel
 Inner Conductor Gold Plated Beryllium
 Copper and Brass
 Coupling Torque 90 N-cm (Nominal)
 Connect/Disconnect Life > 1,000 Cycles

Glass Bead

Electrical:

Frequency Range DC - 40 GHz
 Temperature Range -55 to +125 °C

Mechanical:

Body and Inner Conductor Gold Plated (**) Fe/Ni/Co Alloy (KOVAR)
 Insulator #7070 Glass (Corning)

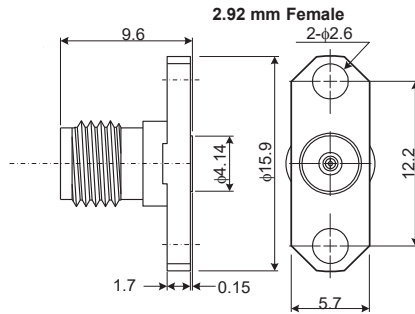
Others:

Soldering Temperature 330°C (max)
 He Leak Rate < 1x10⁻¹⁰ Pam³/sec

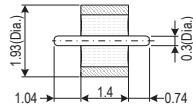


Production Status
 2 Weeks Lead-Time
 for Shipping

TYPE: KPC292F302

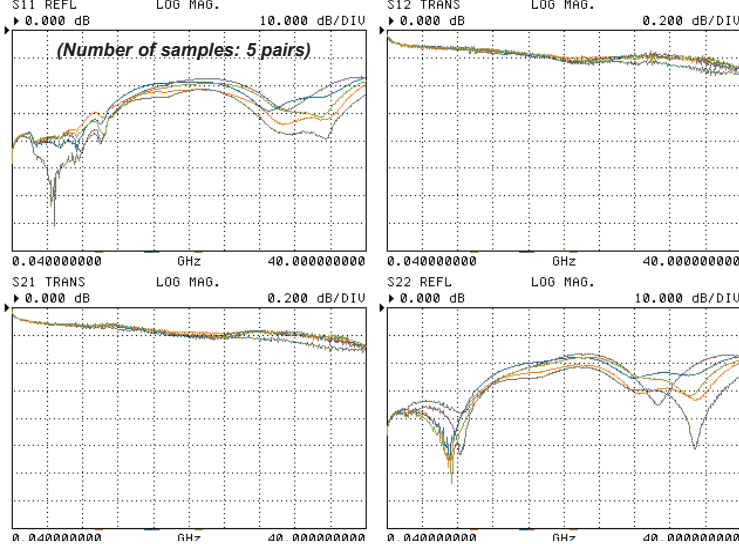


TYPE: GB292 Glass Bead

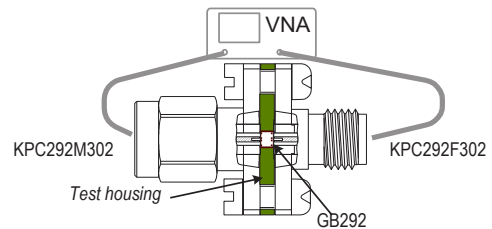


Typical Performance

Note: (*) As Standard DUT Configuration



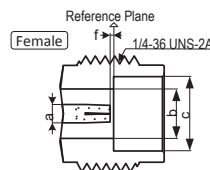
Test configuration



Standard DUT:
 Cascaded KPC292M302 (Customized Product, On request),
 GB292 and KPC292F302

Interface Mating Dimensions of KPC292 (2.92 mm Connectors)

KPC292(2.92 mm)	
a	φ 1.270
b	φ 2.920
c	φ 4.640
d	-----
e	-----
f	0-0.050
g	-----



NOTE:

All dimensions are in millimeters.

(**) Thermo-sonic wire bondable gold plating

RoHS Compliant

REACH Compliant

Specifications Subject to Change Without Notice

Rev. 03 June 2017

Copyright(C) 2002-2017 Kawashima Manufacturing Co., Ltd. <All rights reserved.>