

DC - 65 GHz/40 GHz Panel Adapters, Between 1.85 mm/SMPM and 2.92 mm/SMPM Panel Adapters

DESCRIPTION

"KPC185F-SMPM-FD-PA and "KPC292F-SMPM-FD-PA" coaxial panel adapters are 9.5 mm "D"-holed panel mountable, low SWR, and low loss. They are designed for broadband measurement, instrument, and system applications.

Connector Interfaces

- 1.85 mm and 2.92 mm connectors conform to IEEE-Std-287.
- SMPM male full detent interface is as per MIL-STD-348A 328.2.

SPECIFICATIONS

Electrical:

Frequency Range	$\left\{ \begin{array}{l} \text{DC} - 65 \text{ GHz (1.85 mm)} \\ \text{DC} - 40 \text{ GHz (2.92 mm)} \end{array} \right.$
SWR	
Insertion Loss	< 0.7 dB
Temperature Range	-55 to +125 °C

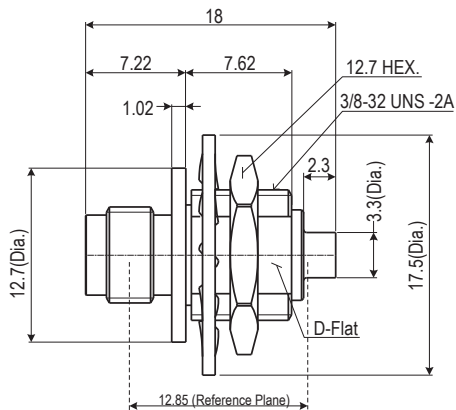
Mechanical:

Body and Outer Conductor	Passivated Stainless Steel (*)
Inner Conductor	Gold Plated Beryllium Copper and Brass
Coupling Torque	90 N-cm (Nominal)
Connect/Disconnect Life	> 100 Cycles (Estimate for SMPM)

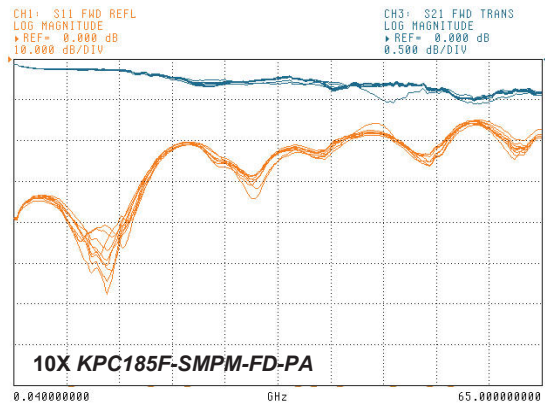


Production Status
2 Weeks Lead-Time
for Shipping

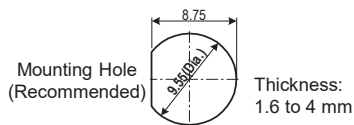
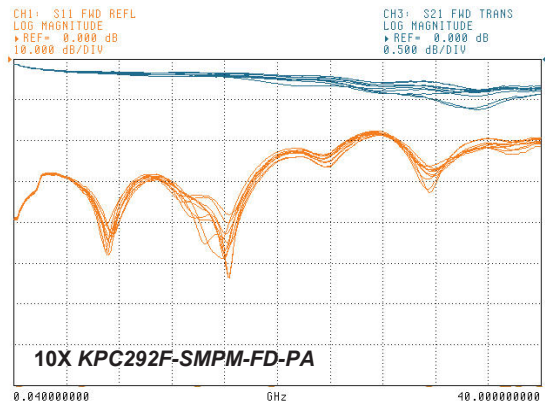
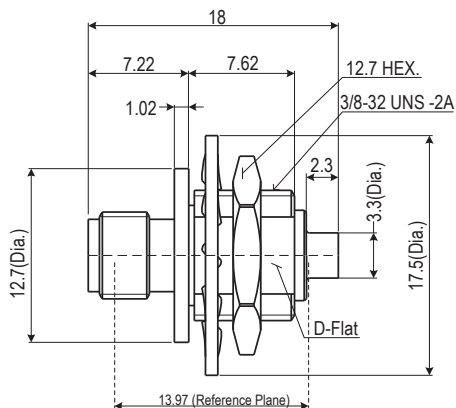
TYPE: KPC185F-SMPM-FD-PA 1.85 mm Female/SMPM-Male (Full detent)



Typical Performance including coaxial adapters for SMPM



TYPE: KPC292F-SMPM-FD-PA 2.92 mm Female/SMPM-Male (Full detent)



NOTE:
All dimensions are in millimeters.
(*) Toothed lockwasher is chromate-converted zinc-plated steel.

RoHS Compliant

REACH Compliant